



Meeting North Whiteley Development Forum

Date and Time Monday, 18th July, 2022 at 6.00 pm.

Venue Virtual via Microsoft Teams

S U P P L E M E N T A R Y A G E N D A

Agenda Item.

12. Developer and Implementation Officer Update (Pages 3 - 20)

City Offices
Colebrook Street
Winchester
SO23 9LJ

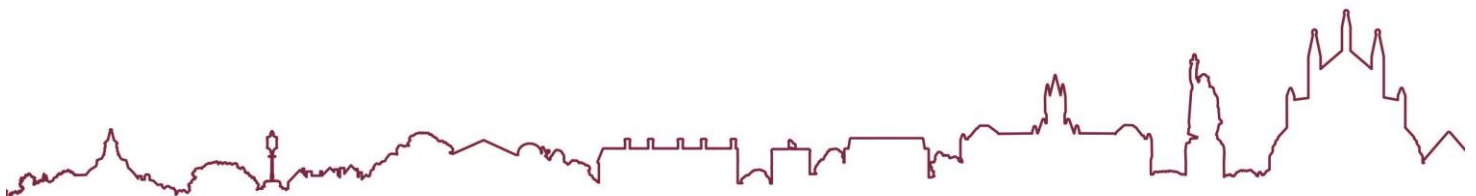
Lisa Kirkman
Strategic Director and Monitoring
Officer

All of the Council's publicly available agendas, reports and minutes are available to view and download from the Council's [Website](#) and are also open to inspection at the offices of the council. As part of our drive to minimise our use of paper we do not provide paper copies of the full agenda pack at meetings. We do however, provide a number of copies of the agenda front sheet at the meeting which contains the QR Code opposite. Scanning this code enables members of the public to easily access all of the meeting papers on their own electronic device. Please hold your device's camera or QR code App over the QR Code so that it's clearly visible within your screen and you will be redirected to the agenda pack.



4 August 2022

Agenda Contact: Matthew Watson, Democratic Services Officer
mwatson@winchester.gov.uk 01962 848 317



This page is intentionally left blank



Bovis Homes  **Linden HOMES**
Part of the Vistry Group

JGP Lakedale

Taylor Wimpey

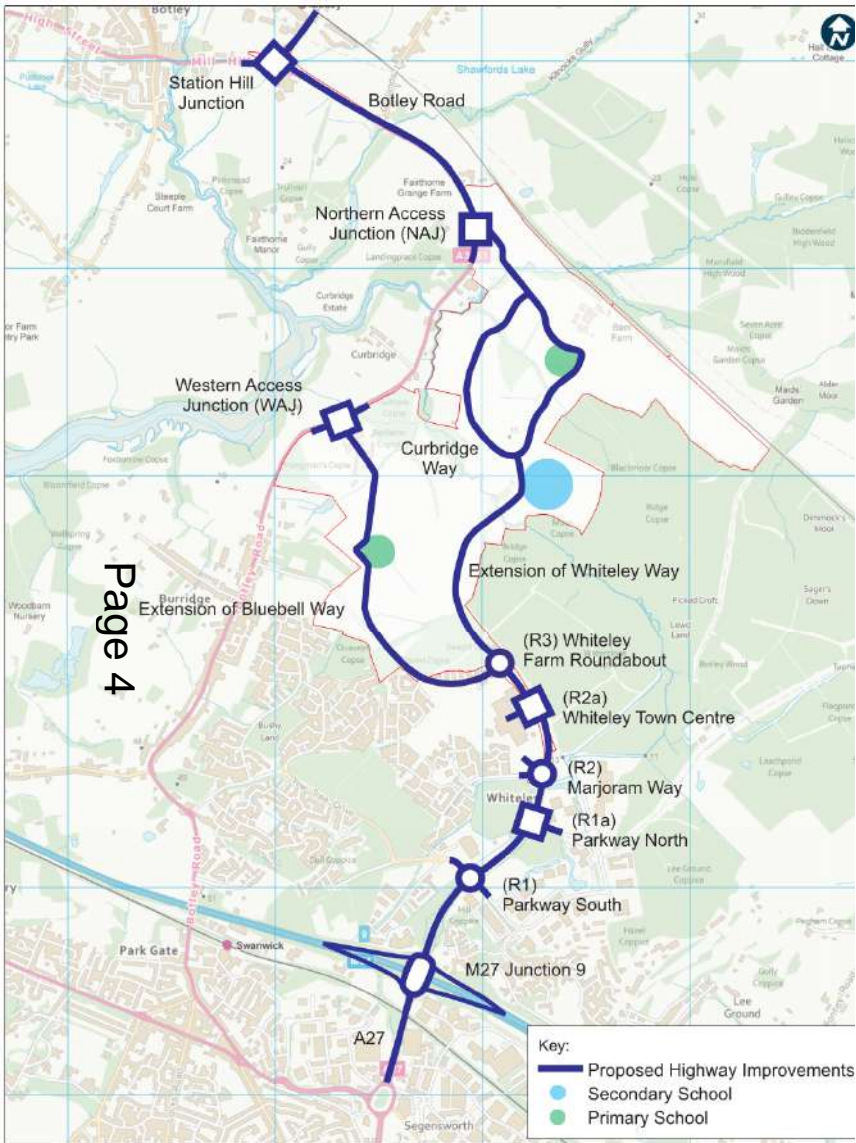
North Whiteley Development

BRIEFING NOTE

North Whiteley Forum

Meeting 18th July 2022

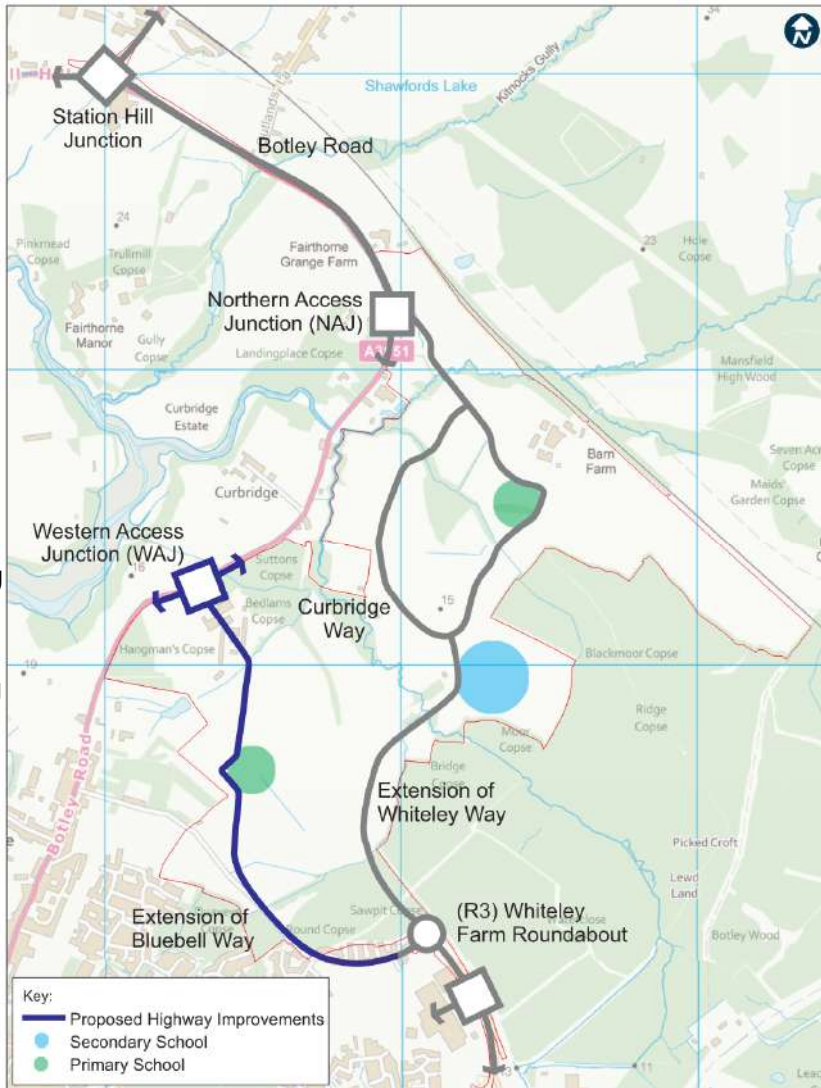




Overview - Highways

- Development Highways & Whiteley Way R3 to R2 delivered by the North Whiteley Consortium
- M27 / R1 Parkway South – update by Hampshire CC

Page 4



Phase 1 Bluebell Way

- Highway completed & Opened to the Public 12th Feb 2021.



Page 6

June 2022

Western Access Junction

Crest & Taylor Wimpey
"Curbridge Meadows" &
"Burridge Green" Developments



Phase 1 Bluebell Way- North



Phase 1 Bluebell Way Central



Page 8

Cornerstone Primary School

TW "Woodlands Chase" Development

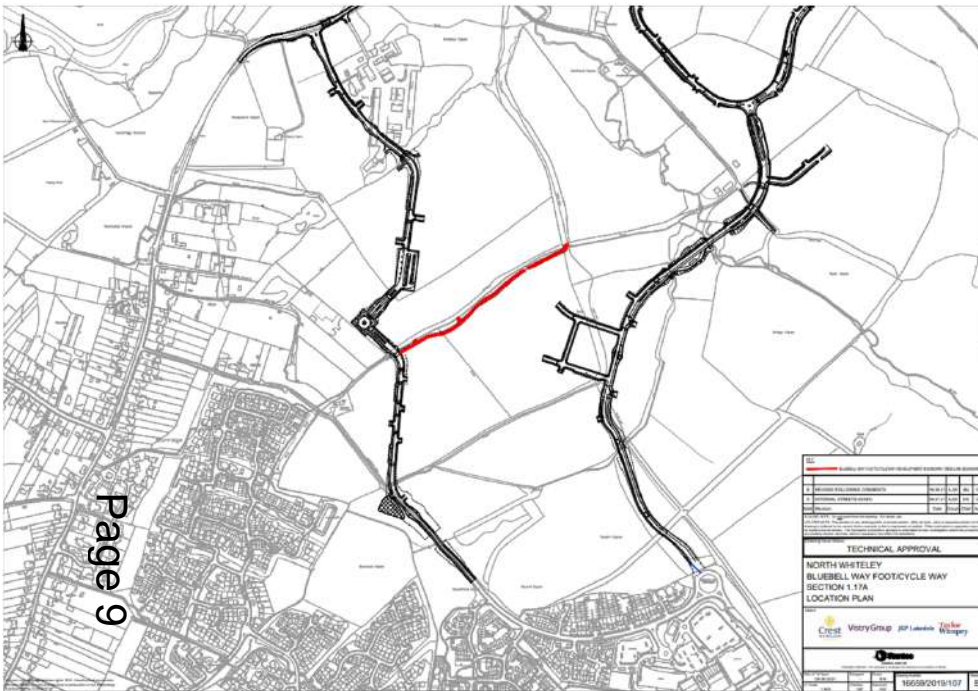
Persimmon "Lakedale at Whiteley Meadows" Development

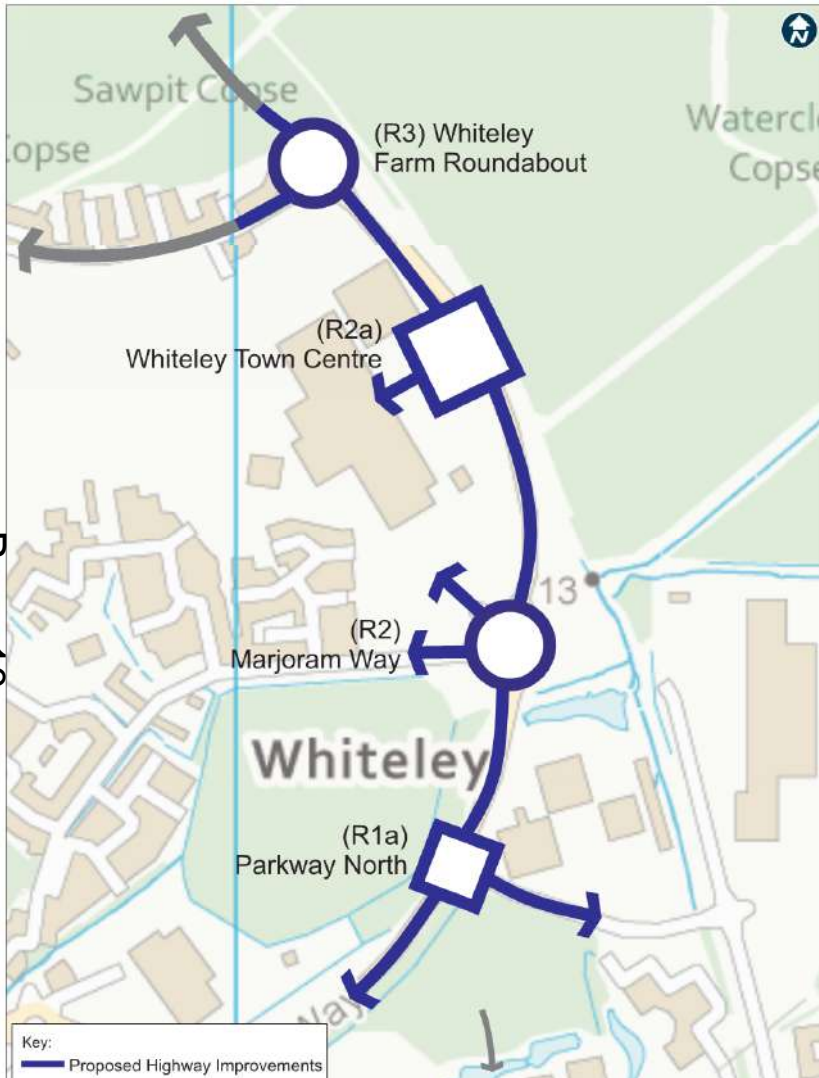
Vistry "Whiteley Meadows" Development (Now occupied)

Phase 1 Bluebell Way: Cornerstone Primary School

Strategic Cycleway: Footpath 9

- Planning Permission (Phase 1) granted Jan 2022
- Technical Approval granted
- S278 Legal Agreement in progress
- Work Contract tendered Spring 2022
- SET BACK: Design Clash with neighbouring Development
- Redesign now being reviewed to update Technical approval
- Update to Planning Permission may be required
- Probable construction: ASAP but likely Spring 2023



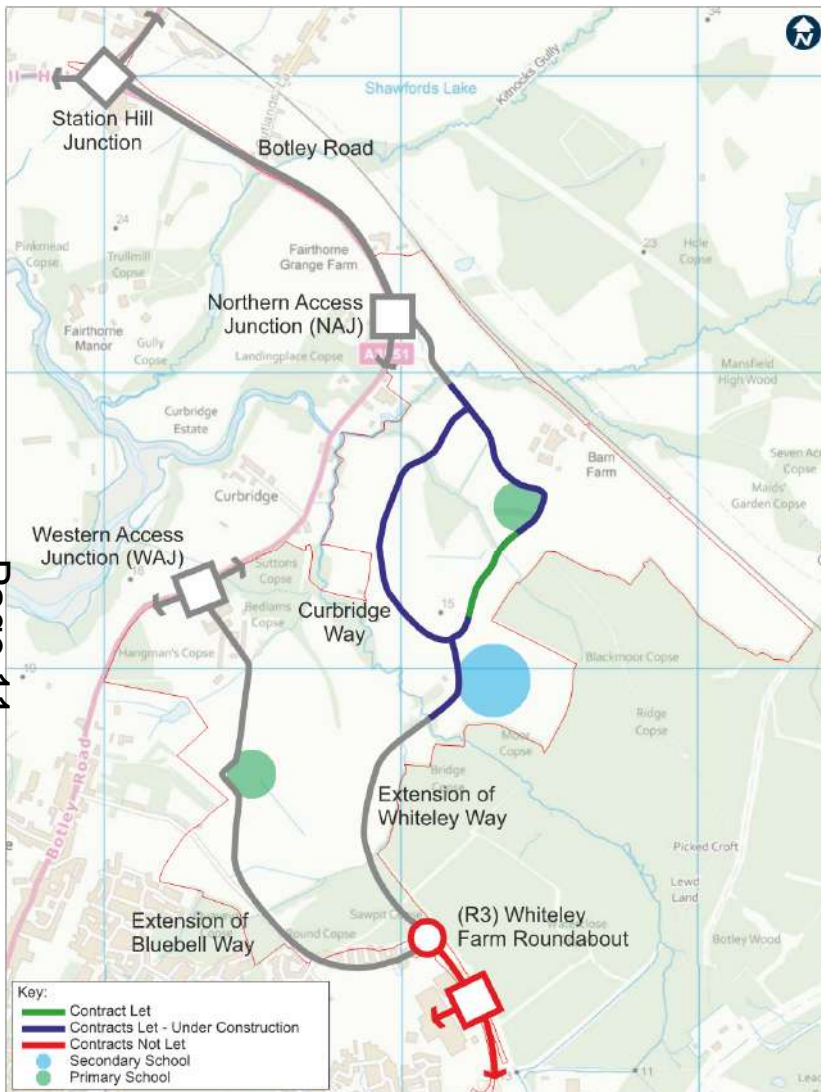


Phase 2 - Off Site Whiteley Way

- Advance embankment works R2 – R3 & 11kV crucial service delivery completed
- R2 – R1 major Service Diversions completed
- s278 legal agreements completed end of June 2022
- Works to be let by August 2022 but to commence in earnest in January 2023.
- Target Works Completion: Spring 2024

Phase 3 - Station Hill - Whiteley Way / Curbridge Way to Whiteley Way

- Northern Access Junction complete
- Botley Road cycleway: Virtually Complete
- Whiteley Way South complete
- Whiteley/Curbridge Way mid section (west): Completion Sept 2022
- Whiteley Way (East): To be complete by end of 2022.



Page 11

North Whiteley
 Package 5 - Bluebell Way
 October 2021
 North Whiteley Consortium



© 1988-2021 North Whiteley/1111/CORE/Highway Phasing Penetration/Access Planning Diagram, Nov 2017.dwg

North Whiteley Development – North Whiteley Forum
BRIEFING NOTE - Meeting 18 July 2022





Vistry "Whiteley Meadows" Development (North)

Whiteley Way / Bridge 1



Phase 3 Whiteley Way North (view Looking South)



Phase 3 Whiteley & Curbridge Way (View to South)



Whiteley Way (Central) -
under construction

Page 14

June 2022



Phase 3 Whiteley Way - View to North

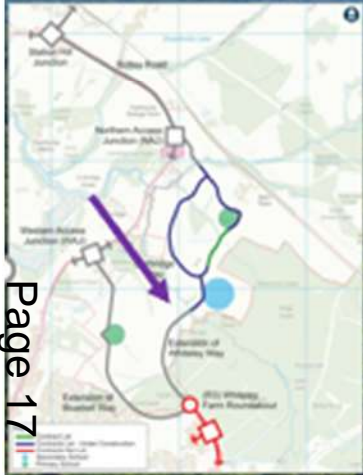


Phase 3 Whiteley Way - View to North



Bridge 2: Road laid on deck

Bridge 2 – Nearing Completion



Page 17



Phase 3 Whiteley Way South

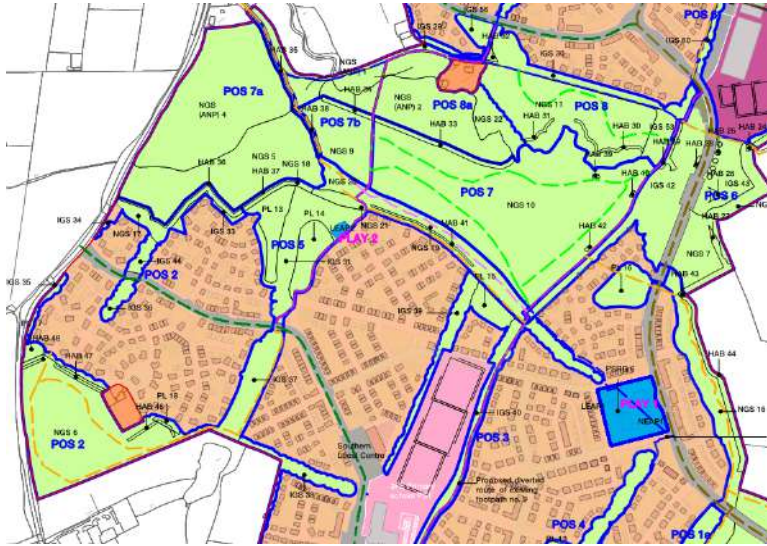
Housing Delivery (@ end June 2022)

Detailed Planning Permission granted for 2,112 Houses (>1/2 of total)

1,348 Houses started

Of which 843 Houses Construction Mortgage Lending CML ready

Of which **620 Houses occupied**



Open Space – Delivery Update

- LEAP 2 (POS 5) & LEAP 3 (POS 12) commenced
- Planning Permission granted for Northern POS
- Planning Permission granted for Southern POS
- 1st Landscape Contracts let – Main works in Autumn/winter 2022

Page 19



This page is intentionally left blank